

FALL 2024



HOKA
FLY HUMAN FLY

INNOVATION IS THE HEART OF HOKA.

Three core technologies make up the heart of HOKA: the Metarocker™, Active Foot Frame™ and Cushioned Midsole. They work together—precisely tuned for every shoe style— to create a specific performance experience.



THE HOKA EXPERIENCE



CUSHIONED MIDSOLE **THE PLUSH PERFORMANCE**

Varying in thickness, composition and design to suit your activity, our plush, shock-absorbing midsole foams are fine tuned to cushion each step, then spring back up.

ACTIVE FOOT FRAME™ **THE CRADLING COMFORT**

Engineered to cradle your foot securely by raising or lowering the midsole walls.



METAROCKER™ **THE SMOOTH STRIDE**

Designed for a smooth and efficient transition underfoot, our curved MetaRocker™ can be dialed up to create a faster transition in the forefoot or dialed down to provide more ground contact and stability.



J-FRAME™ **STABILITY WITH FREEDOM**

Designed to combat overpronation, our patented J-Frame™ delivers extended support with a firm, J-shaped foam on the medial side where the foot typically rolls inward.

H-FRAME™ **SECURE EVERY STEP**

Engineered for enhanced stability, our intuitive H-Frame™ interlocks with the midsole foam to create a secure base.



SWALLOWTAIL™ HEEL **INDEPENDENT SUSPENSION**

Our forked SwallowTail™ heel allows for adjustments on uneven terrain and smoother heel-to-toe transitions.



HUBBLE® HEEL **EFFORTLESSLY SMOOTH** **TRANSITIONS**

Our extended Hubble® Heel is designed to reduce impact and create smoother heel-to-toe transitions.

PROFLY™ **DUAL-DENSITY CUSHIONING**

Designed to deliver an energetic ride, ProFly™ is a two-part midsole that pairs a soft, top layer of foam with a responsive bottom layer of foam.



PROFLYX™ **AGGRESSIVE PROPULSION**

Providing a propulsive ride, our midsole plates deliver a durable, lightweight solution for dynamic energy return.

MATERIALS + CREATION PROCESSES

We recognize that producing footwear and apparel has a global impact, and it carries an obligation to advance sustainable business practices and **good business ethics**. For more information on our efforts toward more **sustainable manufacturing** and information on corporate, human, and environmental responsibility measures taken by HOKA and Deckers Brands, visit hoka.com/corporate-responsibility.



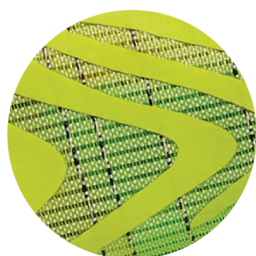
GORE-TEX Footwear Fabric with Recycled Content

GORE-TEX products provide waterproof and windproof protection while remaining comfortably breathable. Delivering a long product life and reduced carbon footprint, they are PFC-free.*



GORE-TEX INVISIBLE FIT With Recycled Content

Designed to virtually disappear, the GORE-TEX Invisible Fit membrane is bonded directly into the upper for lightweight, flexible protection from the elements.



MATRYX®

A ridiculously light, extra-durable woven material with hydrophobic properties, MATRYX® is abrasion resistant to help you get the most out of your runs.



VIBRAM® MEGAGRIP

An industry leader in durable rubber for outdoor products, Vibram® Megagrip is a high-performance, extra-sticky rubber that provides enhanced grip on wet and dry surfaces.



VIBRAM® MEGAGRIP With Litebase Construction

A high-performance rubber that reduces outsole weight while maintaining performance, Vibram® Megagrip with Litebase construction reduces outsole thickness about 40-50% and reduces the tread weight about 25-30%.



VIBRAM® WITH **TRACTION LUG**

Vibram® with Traction Lug technology increases the surface area of outsole rubber, allowing for more rubber contact with terrain.



VIBRAM® ECOSTEP RECYCLE

Delivering the same grip, performance, and durability that Vibram® is known for, Vibram® EcoStep Recycle is a pioneering eco-compound derived from up to 30% recycled materials.



**VIBRAM® ECOSTEP
RECYCLE EVO**

The next evolution of Vibram® EcoStep Recycle, EVO is a high-quality outsole compound that employs 30% recycled XS Trek for enhanced performance.



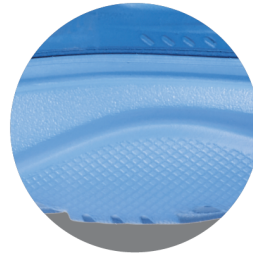
VIBRAM® XS TREK

Delivering an optimal balance of traction and durability, Vibram® XS Trek is a versatile, non-marking outsole compound that allows for adaptable, wet-to-dry traction.



RUBBERIZED FOAM

Lighter than traditional rubber and more resilient than EVA, rubberized foam delivers an energized ride with a proprietary blend of rubber and EVA.



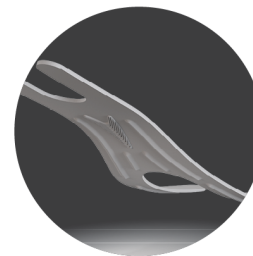
SUGARCANE EVA FOAM

Designed to reduce our reliance on petrochemicals, our sugarcane and EVA blend delivers the same durability without impacting performance.



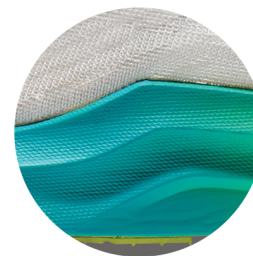
PEBA FOAM

An ultralight foam created using the supercritical foaming process, PEBA is used in our energetic models for enhanced rebound and resilience compared to traditional EVA.



PLATED TECHNOLOGIES

Providing a propulsive ride, our Pebax® and carbon fiber plates deliver a durable, lightweight solution for dynamic energy return.



**SUPER CRITICAL
FOAMING PROCESS**

By using high pressure and temperature, we're able to boost foam expansion and create foam with a soft, unique feel.

Note: All GORE-TEX models from Fall 2024 onward will be updated with a new ePE (expanded Polyethylene) membrane.

* This practice advances Gore Fabrics' goal of being PFC-free out of environmental concern over the lifecycle of its consumer products. The goal is accomplished by using nonfluorinated materials.

⚡ EVERYDAY SPEED



Mach 6

Your gateway to everyday speed

Behold our lightest, most responsive Mach to date. This lively trainer has been fine-tuned for extra energy return with a super critical foam midsole and updated for enhanced durability with strategic rubber coverage in the outsole. Implementing speed focused design details throughout, we've enlisted a new creel jacquard upper with zonal breathability and an internal gusset to deliver the foot-hugging comfort required to set your next PR.

Upper	Midsole	Outsole	Sizes
· Jacquard knit	· SCF EVA	· Durabrasion rubber	W 5-11 (B) M 7-13, 14 (D)
· Gusseted tongue			Price
· Midfoot lock-down			\$140.00 H0057

WOMEN

1147810-BWHT

BLACK / WHITE
06/25/2024

Core



1147810-EGV

EGGNOG / VANILLA
06/25/2024

Annual



1147810-WNCL

WHITE / NIMBUS CLOUD
06/25/2024

Seasonal



1147834-BWHT

BLACK / WHITE **WIDE**
06/25/2024

Core

1147834-EGV

EGGNOG / VANILLA
WIDE
06/25/2024

Annual

1147810-CSSW

CLOUDLESS / WATERPARK
06/25/2024

NEW

Annual



1147810-FTRS

FROST / ROSE GOLD
06/25/2024

NEW

Annual



1147810-WTLT

WHITE / LETTUCE
07/10/2024

NEW

Energy



1147834-FTRS

FROST / ROSE GOLD
WIDE
06/25/2024

NEW

Annual

MEN

1147790-BWHT

BLACK / WHITE
06/25/2024

Core



1147790-OKB

OAT MILK / BARLEY
06/25/2024

Annual



1147790-WNCL

WHITE / NIMBUS CLOUD
06/25/2024

Seasonal



1147833-BWHT

BLACK / WHITE **WIDE**
06/25/2024

Core

1147790-ECC

ELECTRIC COBALT /
VARSITY NAVY
06/25/2024

NEW

Annual



1147790-FTG

FROST / GOLD
06/25/2024

NEW

Annual



1147790-WLR

WHITE / SOLAR FLARE
07/10/2024

NEW

Energy



1147833-FTG

FROST / GOLD **WIDE**
06/25/2024

NEW

Annual

ROAD



Rincon 4

Cloud-Weight Cushion, Built for the Long Haul

Renowned for its startling cushion-to-weight ratio, the Rincon 4 received a top-to-bottom makeover to ensure the uber-light softness it's famous for lasts through even more miles. Upgraded foam provides better rebound while increasing longevity, and works together with rubberized EVA to make each step feel softer than the last. With a durable podular outsole design and a more foot-hugging fit than before, this daily trainer is engineered for a longer life without weighing you down.

NEW

Upper	Midsole	Outsole	Sizes
<ul style="list-style-type: none"> Engineered double jacquard Padded tongue 	<ul style="list-style-type: none"> Two-layer midsole Rear foot-focused Active Foot Frame™ Early stage MetaRocker™ 	<ul style="list-style-type: none"> Rubberized EVA outsole Podular outsole design 	W 5-11, 12 M 7-13, 14, 15, 16 (D)
			Price \$125.00 H0576

WOMEN

1155131-BBLC

BLACK / BLACK
07/10/2024

Core



1155133-BBLC

BLACK / BLACK **WIDE**
07/10/2024

Core

1155131-FTRS

FROST / ROSE GOLD
07/10/2024

Annual



1155133-FTRS

FROST / ROSE GOLD **WIDE**
07/10/2024

Annual

1155131-BWHT

BLACK / WHITE
07/10/2024

Core



1155133-BWHT

BLACK / WHITE **WIDE**
07/10/2024

Core

1155131-SSTC

STARDUST / COSMIC GREY
07/10/2024

Core



1155133-SSTC

STARDUST / COSMIC GREY **WIDE**
07/10/2024

Core

1155131-FNK

FROST / PINK TWILIGHT
07/10/2024

Annual

MARKETING COLOR



1155131-SCQ

SEAFOAM / ELECTRIC AQUA
08/25/2024

Seasonal



MEN

1155130-BBLC

BLACK / BLACK
07/10/2024

Core



1155132-BBLC

BLACK / BLACK **WIDE**
07/10/2024

Core

1155130-FTG

FROST / GOLD
07/10/2024

Annual



1155132-FTG

FROST / GOLD **WIDE**
07/10/2024

Annual

1155130-BWHT

BLACK / WHITE
07/10/2024

Core



1155132-BWHT

BLACK / WHITE **WIDE**
07/10/2024

Core

1155130-SSTC

STARDUST / COSMIC GREY
07/10/2024

Core



1155132-SSTC

STARDUST / COSMIC GREY **WIDE**
07/10/2024

Core

1155130-ECC

ELECTRIC COBALT / VARSITY NAVY
07/10/2024

Annual

MARKETING COLOR



1155132-ECC

ELECTRIC COBALT / VARSITY NAVY **WIDE**
07/10/2024

Annual

MARKETING COLOR

1155130-SRYL

STELLAR GREY / ELECTRIC AQUA
08/25/2024

Seasonal



ROAD - EVERYDAY RUN

SKYWARD X

The plushest ride on the road

We threw out the rulebook when creating the SKYWARD X. Pushing soft and smooth to the extreme, this cushy new trainer features a revolutionary suspension system with a convex carbon fiber plate that allows the suspension system to compress and spring back with each step. A soft, highly resilient PEBA foam sits closest to the foot for a lively, cushioned ride, while a super critical EVA frame provides a stable base for your easiest miles yet.

Upper	Midsole	Outsole		W 5-11, 12
· Flat knit upper	· SCF EVA	· High abrasion rubber outsole	Sizes	M 7-13, 14, 15 (D)
· External molded heel counter	· Carbon fiber plate		Price	\$225.00 H05711
· Ghillie Lacing System	· PEBA			
· Midfoot lockdown	· Inherently stable geometry			

WOMEN

1147912-CYRS
COSMIC GREY / ROSE
GOLD
06/25/2024

NEW
Core



MEN

1147911-CRYS
COSMIC GREY / SILVER
06/25/2024

NEW
Core



Clifton 9

Light and plush for everyday miles.

The ninth iteration of our award-winning franchise, the Clifton 9 is lighter and more cushioned than ever before. Eliminating weight while adding 3mm in Stack Height, this daily runner delivers a revitalized underfoot experience with a responsive new foam and improved outsole design. Removing overlays and hotmelts, the stripped back upper has been consciously crafted with a plusher heel, reflective heel panel, and streamlined tongue with single side medial gusset.

Upper	Midsole	Outsole	Geometry
<ul style="list-style-type: none"> · Vegan · Breathable engineered knit · Gusseted tongue · Upper mesh with 35% recycled polyester · 60% Recycled polyester collar and tongue lining · Laces with 70% recycled nylon and 30% recycled polyester (excluding aglet) 	<ul style="list-style-type: none"> · CMEVA · Early stage MetaRocker™ · Inherently stable geometry 	<ul style="list-style-type: none"> · Durabrasion rubber 	<ul style="list-style-type: none"> W 29mm heel 24mm forefoot M 32mm heel 27mm forefoot
			Sizes
			<ul style="list-style-type: none"> W 5-11, 12 M 7-13, 14, 15, 16 (D)
			Price
			\$145.00 H0577

WOMEN

1127896-BBLC

BLACK / BLACK
06/25/2024

Core



1127896-BRGL

BLACK / ROSE GOLD
06/25/2024

Core



1132211-BRGL

BLACK / ROSE GOLD
WIDE

06/25/2024

Core

1127896-BWHT

BLACK / WHITE
06/25/2024

Core



1132211-BWHT

BLACK / WHITE
WIDE

06/25/2024

Core

1127896-VLS

VANILLA / ASTRAL
06/25/2024

Annual



1127896-WWH

WHITE / WHITE
06/25/2024

Core



1132211-WWH

WHITE / WHITE
WIDE

06/25/2024

Core

1127896-OKLB

OAK / ALABASTER
11/10/2024

NEW

Energy



1127896-FTRS

FROST / ROSE GOLD
06/25/2024

NEW

Annual



1127896-GLLS

GULL / SEA ICE
06/25/2024

NEW

Annual



1127896-LCS

LETTUCE / SOLAR FLARE
07/10/2024

NEW

Energy



1132211-FTRS

FROST / ROSE GOLD
WIDE

06/25/2024

NEW

Annual

1132211-GLLS

GULL / SEA ICE
WIDE

06/25/2024

NEW

Annual

1127896-SMQ

SEAFOAM / AQUA BREEZE
08/25/2024

NEW

Seasonal



Clifton 9

Light and plush for everyday miles.

The ninth iteration of our award-winning franchise, the Clifton 9 is lighter and more cushioned than ever before. Eliminating weight while adding 3mm in Stack Height, this daily runner delivers a revitalized underfoot experience with a responsive new foam and improved outsole design. Removing overlays and hotmelts, the stripped back upper has been consciously crafted with a plusher heel, reflective heel panel, and streamlined tongue with single side medial gusset.

Upper

- Vegan
- Breathable engineered knit
- Gusseted tongue
- Upper mesh with 35% recycled polyester
- 60% Recycled polyester collar and tongue lining
- Laces with 70% recycled nylon and 30% recycled polyester (excluding aglet)

Midsole

- CMEVA
- Early stage MetaRocker™
- Inherently stable geometry

Outsole

- Durabrasion rubber

Geometry

W 29mm heel 24mm forefoot
M 32mm heel 27mm forefoot

Sizes

W 5-11, 12
M 7-13, 14, 15, 16 (D)

Price

\$145.00 H0577

MEN

1127895-BBLC

BLACK / BLACK
06/25/2024

Core



1127895-BWHT

BLACK / WHITE
06/25/2024

Core



1132210-BWHT

BLACK / WHITE **WIDE**
06/25/2024

Core

1127895-HMBC

HARBOR MIST / BLACK
06/25/2024

Core



1132210-HMBC

HARBOR MIST / BLACK **WIDE**
06/25/2024

Core

1127895-NCSW

NIMBUS CLOUD / STEEL WOOL
06/25/2024

Core



1127895-OKB

OAT MILK / BARLEY
06/25/2024

Annual



1127895-WWH

WHITE / WHITE
06/25/2024

Core



1127895-OKLB

OAK / ALABASTER
11/10/2024

NEW

Energy



1127895-FTG

FROST / GOLD
06/25/2024

NEW

Annual



1127895-SLRL

SOLAR FLARE / LETTUCE
07/10/2024

NEW

Energy



1132210-FTG

FROST / GOLD **WIDE**
06/25/2024

NEW

Annual

1132210-SLRL

SOLAR FLARE / LETTUCE **WIDE**
07/10/2024

NEW

Energy

1127895-STLC

STARDUST / ELECTRIC COBALT
06/25/2024

NEW

Annual



1127895-MCN

MIDNIGHT / OCEANIC
08/25/2024

NEW

Seasonal



1132210-STLC

STARDUST / ELECTRIC COBALT **WIDE**
06/25/2024

NEW

Annual

Clifton 9 GTX

A cushioned ride, rain or shine.

Empowering runners to log their miles - no matter the weather - our classic Clifton has been updated with GORE-TEX Invisible Fit with recycled content and weather-ready traction pods. HOKA's first-ever weatherproof road shoe, this splash-ready silhouette features 360-degree reflectivity and closed mesh construction for added protection. Designed to shine, even when the weather doesn't, the Clifton 9 GTX proves no forecast is too fierce.

Upper	Midsole	Outsole	Sizes
<ul style="list-style-type: none"> · Engineered knit · GORE-TEX Invisible Fit with 70% recycled polyester face fabric · Breathable · Extended heel pull for easy entry · 30% Recycled polyester upper mesh and collar · 100% recycled polyester top tongue mesh · 92% Recycled polyester bottom tongue mesh 	<ul style="list-style-type: none"> · CMEVA · Early stage MetaRocker™ 	<ul style="list-style-type: none"> · Durabrasion rubber · Weather-ready traction pods 	W 5-11, 12 M 7-13, 14, 15, 16 (D)
Price			\$160.00 H0058

WOMEN

1141490F-BBLC

BLACK / BLACK
06/25/2024

Core



1141490F-CMK

COSMIC PEARL / SMOKY QUARTZ
09/25/2024

NEW
Annual



MEN

1141470F-BBLC

BLACK / BLACK
06/25/2024

Core



1141470F-STLV

SLATE / ALOE VERA
09/25/2024

NEW
Annual



Bondi 8

The Ultra-Cushioned Game-Changer

One of the hardest working shoes in the HOKA lineup, the Bondi has continually evolved, most recently reworked with softer, lighter foams and a brand-new extended heel geometry. Taking on a billowed effect, the rear crash pad affords an incredibly soft and balanced ride from heel strike to forefoot transition.

Upper

- Vegan
- Engineered mesh with 50% recycled polyester
- Partially gusseted tongue
- Ortholite® hybrid sockliner
- 87% Recycled polyester strobil board
- 100% recycled polyester sockliner top cloth
- 40% Recycled polyester eyestay lining

Midsole

- CMEVA

Outsole

- Durabrasion rubber outsole
- Zonal rubber placement for weight savings

Geometry	W 31mm heel 27mm forefoot
	M 33mm heel 29mm forefoot
Sizes	W 5-11, 12
	M 7-13, 14, 15, 16 (D)
Price	\$165.00 H0578

WOMEN

1127952-BBLC

BLACK / BLACK
06/25/2024

Core



1127954-BBLC

BLACK / BLACK **WIDE**
06/25/2024

Core

1127952-HMLR

HARBOR MIST / LUNAR
ROCK
06/25/2024

Core



1127954-HMLR

HARBOR MIST / LUNAR
ROCK **WIDE**
06/25/2024

Core

1127952-PTWL

PINK TWILIGHT /
WATERPARK
06/25/2024

NEW

Seasonal



1127952-BWHT

BLACK / WHITE
06/25/2024

Core



1127954-BWHT

BLACK / WHITE **WIDE**
06/25/2024

Core

1127952-WWH

WHITE / WHITE
06/25/2024

Core



1127954-WWH

WHITE / WHITE **WIDE**
06/25/2024

Core

1127952-SLRL

SOLAR FLARE / LETTUCE
07/10/2024

NEW

Energy



1127952-CMV

CREAM / VANILLA
06/25/2024

Annual



1127954-CMV

CREAM / VANILLA **WIDE**
06/25/2024

Annual

1127952-FTRS

FROST / ROSE GOLD
06/25/2024

NEW

Annual



1127952-SQB

STARDUST / AQUA BREEZE
08/25/2024

NEW

Annual



Bondi 8

The Ultra-Cushioned Game-Changer

One of the hardest working shoes in the HOKA lineup, the Bondi has continually evolved, most recently reworked with softer, lighter foams and a brand-new extended heel geometry. Taking on a billowed effect, the rear crash pad affords an incredibly soft and balanced ride from heel strike to forefoot transition.

Upper

- Vegan
- Engineered mesh with 50% recycled polyester
- Partially gusseted tongue
- Ortholite® hybrid sockliner
- 87% Recycled polyester strobel board
- 100% recycled polyester sockliner top cloth
- 40% Recycled polyester eyestay lining

Midsole

- CMEVA

Outsole

- Durabrasion rubber outsole
- Zonal rubber placement for weight savings

Geometry	W 31mm heel 27mm forefoot
	M 33mm heel 29mm forefoot
Sizes	W 5-11, 12
	M 7-13, 14, 15, 16 (D)
Price	\$165.00 H0578

MEN

1123202-BBLC

BLACK / BLACK
06/25/2024

Core



1127953-BBLC

BLACK / BLACK **WIDE**
06/25/2024

Core

1123202-BWHT

BLACK / WHITE
06/25/2024

Core



1127953-BWHT

BLACK / WHITE **WIDE**
06/25/2024

Core

1123202-OKB

OAT MILK / BARLEY
06/25/2024

Annual



1123202-OSAA

OUTER SPACE / ALL ABOARD
06/25/2024

Core



1127953-OSAA

OUTER SPACE / ALL ABOARD **WIDE**
06/25/2024

Core

1123202-SHMS

SHARKSKIN / HARBOR MIST
06/25/2024

Core



1127953-SHMS

SHARKSKIN / HARBOR MIST **WIDE**
06/25/2024

Core

1123202-WWH

WHITE / WHITE
06/25/2024

Core



1123202-FTG

FROST / GOLD
06/25/2024

NEW

Annual



1123202-STTC

STARDUST / LETTUCE
06/25/2024

NEW

Annual



1127953-STTC

STARDUST / LETTUCE **WIDE**
06/25/2024

NEW

Annual

Bondi 8 X-Wide

The Ultra-Cushioned Game-Changer

One of the hardest working shoes in the HOKA lineup, the Bondi has continually evolved, most recently reworked with softer, lighter foams and a brand-new extended heel geometry. Taking on a billowed effect, the rear crash pad affords an incredibly soft and balanced ride from heel strike to forefoot transition.

Upper

- Vegan
- Engineered mesh with 50% recycled polyester
- Partially gusseted tongue
- Ortholite® hybrid sockliner
- 87% Recycled polyester strobil board
- 100% recycled polyester sockliner top cloth
- 40% Recycled polyester eyestay lining

Midsole

- CMEVA

Outsole

- Durabrasion rubber outsole
- Zonal rubber placement for weight savings

Geometry **M** 33mm heel 29mm forefoot

Sizes **M** 8-13, 14 (4E)

Price **\$165.00** H0578

MEN

1127955-BBLC

BLACK / BLACK
06/25/2024

Core



1127955-BWHT

BLACK / WHITE
06/25/2024

Core



1127955-SHMS

SHARKSKIN / HARBOR
MIST
06/25/2024

Core



Bondi 7

The Ultra-Cushioned Game-Changer

The most cushioned HOKA road shoe available, the Bondi 7 delivers a smooth and balanced ride. Engineered with the same full EVA midsole, breathable mesh upper and signature MetaRocker™ technology as its predecessor, the Bondi 7 is updated with a plush collar designed to accommodate a narrower heel—and conform to a wide variety of ankles.

Upper

- Vegan
- Open mesh construction
- Memory foam collar
- TPU overlay

Midsole

- CMEVA

Outsole

- Rubber outsole

Sizes	W 5-11, 12 M 7-13, 14, 15, 16
Price	\$165.00 H0578

WOMEN

1110519-BBLC

BLACK / BLACK
06/25/2024

Core



1110519-HST

HARBOR MIST / WHITE
06/25/2024

Core



1110519-IRW

ICE WATER / WHITE
06/25/2024

Core



1110531-BBLC

BLACK / BLACK **WIDE**
06/25/2024

Core

1110531-HST

HARBOR MIST / WHITE
WIDE
06/25/2024

Core

1110531-IRW

ICE WATER / WHITE
WIDE
06/25/2024

Core

1110519-PHP

PEACH WHIP / WHITE
06/25/2024

Core



1110519-WWH

WHITE / WHITE
06/25/2024

Core



1110531-PHP

PEACH WHIP / WHITE
WIDE
06/25/2024

Core

1110531-WWH

WHITE / WHITE **WIDE**
06/25/2024

Core

MEN

1110518-BBLC

BLACK / BLACK
06/25/2024

Core



1110518-HST

HARBOR MIST / WHITE
06/25/2024

Core



1110518-OZW

OLIVE HAZE / WHITE
06/25/2024

Core



1110530-BBLC

BLACK / BLACK **WIDE**
06/25/2024

Core

1110530-HST

HARBOR MIST / WHITE
WIDE
06/25/2024

Core

1110530-OZW

OLIVE HAZE / WHITE
WIDE
06/25/2024

Core

1110518-OTRS

OUTERSPACE / WHITE
06/25/2024

Core



1110530-OTRS

OUTERSPACE / WHITE
WIDE
06/25/2024

Core

Bondi SR

The ultimate workplace warrior.

The Bondi SR takes the most cushioned shoe in the HOKA road-shoe lineup and reworks the silhouette to handle the demands of daily life. Employing water-resistant leather, a slip-resistant outsole and EVA midsole for all-day cushioning, this workplace warrior features an ultra-grippy, full ground contact rubber that stands up to the demands of the service industry and medical field alike.

Upper

- Water-resistant leather
- Memory foam collar
- Tongue lining wrap

Midsole

- EVA
- Early stage MetaRocker™

Outsole

- Slip-resistant rubber and tread

Geometry

W 31 mm heel 25 mm forefoot
M 34 mm heel 28 mm forefoot

Sizes

W 5-11
M 7-13,14,15

Price

\$175.00 H0578

WOMEN

1110521-BBLC

BLACK / BLACK
06/25/2024

Core



1129351-BBLC

BLACK / BLACK **WIDE**
06/25/2024

Core

1110521-PHW

PEACH WHIP / PEACH WHIP
06/25/2024

Annual



1110521-HMLR

HARBOR MIST / LUNAR ROCK
06/25/2024

Core



1129351-HMLR

HARBOR MIST / LUNAR ROCK **WIDE**
06/25/2024

Core

1110521-WHT

WHITE
06/25/2024

Core



1129351-WHT

WHITE **WIDE**
06/25/2024

Core

1110521-ICW

ICE WATER / ICE WATER
06/25/2024

Core



MEN

1110520-BBLC

BLACK / BLACK
06/25/2024

Core



1129350-BBLC

BLACK / BLACK **WIDE**
06/25/2024

Core

1110520-HMLR

HARBOR MIST / LUNAR ROCK
06/25/2024

Core



1129350-HMLR

HARBOR MIST / LUNAR ROCK **WIDE**
06/25/2024

Core

1110520-OTRS

OUTERSPACE / WHITE
06/25/2024

Core



1129350-OTRS

OUTERSPACE / WHITE **WIDE**
06/25/2024

Core

Gaviota 5

Stability without sacrificing comfort.

Forget what you thought you knew about stability shoes. The Gaviota 5's stabilizing H-Frame™ has allowed us to implement softer foams than ever before. Delivering inherent stability without compromising cushioning, we've paired our intuitive H-Frame base with a breathable creel jacquard upper, ultra-plush collar, and Bondi-level cushioning to deliver that signature HOKA ride.

Upper

- Recycled content engineered mesh and poly laces
- Gusseted tongue
- Heel pull tab
- Ortholite® sockliner

Midsole

- H-Frame™ midsole support
- CMEVA
- Inherently stable geometry

Outsole

- Durabrasion rubber

Geometry	W 0.0 M 0.0
Sizes	W 5-11, 12 M 7-13, 14, 15 (D)
Price	\$175.00 H0529

WOMEN

1134235-BBLC

BLACK / BLACK
06/25/2024

Core



1134270-BBLC

BLACK / BLACK **WIDE**
06/25/2024

Core

1134235-VIG

VANILLA / EGGNOG
06/25/2024

Annual



1134235-BWHT

BLACK / WHITE
06/25/2024

Core



1134270-BWHT

BLACK / WHITE **WIDE**
06/25/2024

Core

1134235-FTRS

FROST / ROSE GOLD
06/25/2024

NEW
Annual



1134270-FTRS

FROST / ROSE GOLD **WIDE**
06/25/2024

NEW
Annual

1134235-HMRG

HARBOR MIST / ROSE
GOLD
06/25/2024

Core



1134270-HMRG

HARBOR MIST / ROSE
GOLD **WIDE**
06/25/2024

Core

1134235-SCP

SEA ICE / PINK TWILIGHT
06/25/2024

NEW
Annual



1134270-SCP

SEA ICE / PINK TWILIGHT **WIDE**
06/25/2024

NEW
Annual

Gaviota 5

Stability without sacrificing comfort.

Forget what you thought you knew about stability shoes. The Gaviota 5's stabilizing H-Frame™ has allowed us to implement softer foams than ever before. Delivering inherent stability without compromising cushioning, we've paired our intuitive H-Frame base with a breathable creel jacquard upper, ultra-plush collar, and Bondi-level cushioning to deliver that signature HOKA ride.

Upper

- Recycled content engineered mesh and poly laces
- Gusseted tongue
- Heel pull tab
- Ortholite® sockliner

Midsole

- H-Frame™ midsole support
- CMEVA
- Inherently stable geometry

Outsole

- Durabrasion rubber

Geometry	W 0.0
	M 0.0
Sizes	W 5-11, 12
	M 7-13, 14, 15 (D)
Price	\$175.00 H0529

MEN

1127929-BYT
BARLEY / OAT MILK
06/25/2024
Annual



1127929-BBLC
BLACK / BLACK
06/25/2024
Core



1127929-BWHT
BLACK / WHITE
06/25/2024
Core



1134234-BYT
BARLEY / OAT MILK
WIDE
06/25/2024
Annual

1134234-BBLC
BLACK / BLACK **WIDE**
06/25/2024
Core

1134234-BWHT
BLACK / WHITE **WIDE**
06/25/2024
Core

1127929-LDVB
LIMESTONE / DIVA BLUE
06/25/2024
Core



1127929-BTRC
BLACK / ELECTRIC COBALT
06/25/2024
NEW
Annual



1127929-FTG
FROST / GOLD
06/25/2024
NEW
Annual



1134234-LDVB
LIMESTONE / DIVA BLUE
WIDE
06/25/2024
Core

1134234-FTG
FROST / GOLD **WIDE**
06/25/2024
NEW
Annual

1127929-MCN
MIDNIGHT / OCEANIC
08/25/2024
NEW
Seasonal



Arahi 7

A surprisingly sleek stability shoe.

Not your average stability shoe, the new Arahi 7 delivers the same streamlined support as its predecessor with our patented Frame™ technology. Updated with a zonally engineered, flat knit upper for improved midfoot lockdown, we've fine-tuned the fit with a plusher tongue, mid-foot ghillies, and a stretchy dual gusset beneath the lace line to help mitigate tongue migration.

Upper

- Flat knit
- Gusseted tongue
- 3D screen printed overlay
- Midfoot lock-down

Midsole

- CMEVA midsole
- Early stage MetaRocker™
- J-Frame™ midsole support

Outsole

- Zonal rubber
- Durabrasion rubber

Sizes

W 5-11, 12

M 7-13, 14, 15 (D)

Price

\$145.00 H0577

WOMEN

1147851-BWHT

BLACK / WHITE
06/25/2024

Core



1147890-BWHT

BLACK / WHITE **WIDE**
06/25/2024

Core

1147851-FTRS

FROST / ROSE GOLD
06/25/2024

NEW

Annual



1147890-FTRS

FROST / ROSE GOLD
WIDE

06/25/2024

NEW

Annual

1147851-BSG

BLANC DE BLANC / ROSE
GOLD
06/25/2024

Core



1147890-BSG

BLANC DE BLANC / ROSE
GOLD **WIDE**

06/25/2024

NEW

Core

1147851-GLP

GULL / PINK TWILIGHT
06/25/2024

NEW

Annual



1147890-GLP

GULL / PINK TWILIGHT
WIDE

06/25/2024

NEW

Annual

1147851-VRM

VANILLA / CREAM
06/25/2024

Annual



1147890-VRM

VANILLA / CREAM **WIDE**
06/25/2024

Annual

1147851-MSF

MIDNIGHT / SEAFOAM
08/25/2024

NEW

Seasonal



ROAD - EVERYDAY RUN

Arahi 7

A surprisingly sleek stability shoe.

Not your average stability shoe, the new Arahi 7 delivers the same streamlined support as its predecessor with our patented Frame™ technology. Updated with a zonally engineered, flat knit upper for improved midfoot lockdown, we've fine-tuned the fit with a plusher tongue, mid-foot ghillies, and a stretchy dual gusset beneath the lace line to help mitigate tongue migration.

Upper

- Flat knit
- Gusseted tongue
- 3D screen printed overlay
- Midfoot lock-down

Midsole

- CMEVA midsole
- Early stage MetaRocker™
- J-Frame™ midsole support

Outsole

- Zonal rubber
- Durabrasion rubber

Sizes

W 5-11, 12

M 7-13, 14, 15 (D)

Price

\$145.00 H0577

MEN

1147850-BWHT

BLACK / WHITE
06/25/2024

Core



1147870-BWHT

BLACK / WHITE **WIDE**
06/25/2024

Core



1147850-OPC

OUTER SPACE / WHITE
06/25/2024

Core



1147870-OPC

OUTER SPACE / WHITE
WIDE
06/25/2024

Core



1147850-MTSH

MIDNIGHT / SHORELINE
08/25/2024

NEW

Seasonal



1147850-BDBSW

BLANC DE BLANC / STEEL
WOOL
06/25/2024

Core



1147870-BDBSW

BLANC DE BLANC / STEEL
WOOL **WIDE**
06/25/2024

Core

1147850-FTG

FROST / GOLD
06/25/2024

NEW

Annual



1147870-FTG

FROST / GOLD **WIDE**
06/25/2024

NEW

Annual

1147850-OKB

OAT MILK / BARLEY
06/25/2024

Annual



1147870-OKB

OAT MILK / BARLEY
WIDE
06/25/2024

Annual

1147850-STLC

STARDUST / ELECTRIC
COBALT
06/25/2024

NEW

Annual



Solimar

An adaptable daily trainer for all levels.

Mirroring the smooth rolling pattern of SoCal's Solimar beach, this streamlined trainer offers a sublime ride for everyday miles. Engineered with an approachable Stack Height, balanced midsole and extended crash pad, this adaptable silhouette with extra rubber to combat high-wear areas. An effortless daily runner, the Solimar is finished with an extended heel pull for easy on and off.

Upper

- Vegan
- Stretchy mesh
- Extended heel pull

Midsole

- Molded EVA sockliner
- CMEVA
- Late stage MetaRocker™

Outsole

- High abrasion rubber outsole

Geometry
W 18.0 mm 24.0 mm
M 20.0 mm 26.0 mm

Sizes
W 5-11 (B)
M 7-13, 14 (D)

Price
\$125.00 H0576

WOMEN

1123075-BBLC

BLACK / BLACK
 06/25/2024

Core



1123075-BWHT

BLACK / WHITE
 06/25/2024

Core



1123075-VND

VANILLA / SANDSTONE
 06/25/2024

Core



1123075-WWH

WHITE / WHITE
 06/25/2024

Core



1123075-FCL

FROST / CLOUDLESS
 06/25/2024

NEW
 Seasonal



1123075-PLGH

PINK TWILIGHT / LETTUCE
 06/25/2024

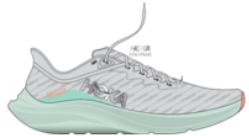
NEW
 Seasonal



1123075-SQB

STARDUST / AQUA BREEZE
 06/25/2024

NEW
 Seasonal



Solimar

An adaptable daily trainer for all levels.

Mirroring the smooth rolling pattern of SoCal's Solimar beach, this streamlined trainer offers a sublime ride for everyday miles. Engineered with an approachable Stack Height, balanced midsole and extended crash pad, this adaptable silhouette with extra rubber to combat high-wear areas. An effortless daily runner, the Solimar is finished with an extended heel pull for easy on and off.

Upper <ul style="list-style-type: none">· Vegan· Stretchy mesh· Extended heel pull	Midsole <ul style="list-style-type: none">· Molded EVA sockliner· CMEVA· Late stage MetaRocker™	Outsole <ul style="list-style-type: none">· High abrasion rubber outsole	Geometry <hr/> W 18.0 mm 24.0 mm <hr/> M 20.0 mm 26.0 mm <hr/>
			Sizes <hr/> W 5-11 (B) <hr/> M 7-13, 14 (D) <hr/>
			Price \$125.00 H0576

MEN

1123074-BBLC

BLACK / BLACK
06/25/2024

Core



1123074-BWHT

BLACK / WHITE
06/25/2024

Core



1123074-VVWH

WHITE / WHITE
06/25/2024

Core



1123074-BKIT

BLACK / LETTUCE
06/25/2024

NEW

Seasonal



1123074-FCL

FROST / CLOUDLESS
06/25/2024

NEW

Seasonal





TRAIL

JIM WALMSLEY
2023 UTMB CHAMPION

Speedgoat 6

A grippy, responsive ride for technical terrain

There's only one GOAT on the trail. And this is it. Combining HOKA's tried and true cushioning with aggressive traction and ultralight materials, the Speedgoat 6 was born to tame the trail. A workhorse for technical terrain, this recent reissue was refined with a breathable woven textile upper, foot-hugging internal chassis, plusher dual gusset tongue, and revised lug orientation inspired by the hoof of a goat (what else?)

Upper

- Vegan
- Dynamic sandwich mesh
- Gusseted tongue

Midsole

- CMEVA
- All new lightweight, resilient foam

Outsole

- Vibram® Megagrip with Traction Lug
- 5 mm lugs

Sizes

W 5-11, 12

M 7-13, 14, 15 (D)

Price

\$155.00 H0528

WOMEN

1147811-BLVR

BLACK / ALOE VERA
07/10/2024

NEW

Seasonal



1147811-MHTM

MIDNIGHT / METEOR
07/10/2024

NEW

Seasonal



1147811-ORD

OUTER ORBIT / STARDUST
07/10/2024

NEW

Core



1147811-SYST

STELLAR GREY / ASTEROID
07/10/2024

NEW

Core



1147832-MHTM

MIDNIGHT / METEOR
WIDE

07/10/2024

NEW

Seasonal



1147811-GKS

GULL / STORMY SKIES
08/10/2024

NEW

Annual



1147832-SYST

STELLAR GREY / ASTEROID
WIDE

07/10/2024

NEW

Core



MEN

1147791-AQL

ANTIQUE OLIVE / SQUASH
07/10/2024

NEW

Seasonal



1147791-BKSTR

BLACK / STARDUST
07/10/2024

NEW

Core



1147791-GCG

GALACTIC GREY / HOKA
BLUE

07/10/2024

NEW

Core



1147830-AQL

ANTIQUE OLIVE / SQUASH
WIDE

07/10/2024

NEW

Seasonal



1147830-GCG

GALACTIC GREY / HOKA
BLUE **WIDE**

07/10/2024

NEW

Core



1147791-SMY

STORMY SKIES / AQUA
BREEZE

07/10/2024

NEW

Seasonal



1147791-GKS

GULL / STORMY SKIES
08/10/2024

NEW

Annual



1147830-SMY

STORMY SKIES / AQUA
BREEZE **WIDE**

07/10/2024

NEW

Seasonal



Speedgoat 6 GTX

A workhorse for sloppy, wet conditions.

The Speedgoat 6 GTX is now even more comfortable with GORE-TEX's Invisible Fit waterproof membrane for a lighter, more flexible construction to help avoid pressure points. Grounded in a Vibram® Megagrip with Traction Lug outsole for increased bite on loose soil, this trail icon employs a foot-cradling heel bolster, lightweight, responsive midsole compound, and a protective toe rand for charging through the rough stuff. Bring it, weather.

NEW

<p>Upper</p> <ul style="list-style-type: none"> · 100% recycled polyester mesh · Waterproof GORE-TEX Invisible Fit membrane · Protective toe rand · Bolstered heel collar construction · Molded EVA sockliner · Vegan · Laces with 70% recycled nylon and 30% recycled polyester (excluding aglet) 	<p>Midsole</p> <ul style="list-style-type: none"> · CMEVA · Late stage MetaRocker™ 	<p>Outsole</p> <ul style="list-style-type: none"> · Vibram® Megagrip with Traction Lug · 5 mm lugs 	<table border="0"> <tr> <td style="padding-right: 10px;">Sizes</td> <td>W 5-11, 12</td> </tr> <tr> <td></td> <td>M 7-13, 14, 15 (D)</td> </tr> <tr> <td style="padding-right: 10px;">Price</td> <td>\$170.00 H0009</td> </tr> </table>	Sizes	W 5-11, 12		M 7-13, 14, 15 (D)	Price	\$170.00 H0009
Sizes	W 5-11, 12								
	M 7-13, 14, 15 (D)								
Price	\$170.00 H0009								

WOMEN

1155151-SZQ
SMOKY QUARTZ / QUARTZITE
09/25/2024
Annual



1155151-BCKT
BLACK / OUTER ORBIT
08/25/2024
Core



1155151-CSMCG
COSMIC GREY / ASTEROID
08/25/2024
Core



MEN

1155150-STLV
SLATE / ALOE VERA
09/25/2024
Annual



1155150-BCKT
BLACK / OUTER ORBIT
08/25/2024
Core



1155770-BCKT
BLACK / OUTER ORBIT
WIDE
08/25/2024
Core

1155150-SSIT
STARDUST / OUTER ORBIT
08/25/2024
Core



Speedgoat 6 GTX Wide

A workhorse for sloppy, wet conditions.

The Speedgoat 6 GTX is now even more comfortable with GORE-TEX's Invisible Fit waterproof membrane for a lighter, more flexible construction to help avoid pressure points. Grounded in a Vibram® Megagrip with Traction Lug outsole for increased bite on loose soil, this trail icon employs a foot-cradling heel bolster, lightweight, responsive midsole compound, and a protective toe rand for charging through the rough stuff. Bring it, weather.

NEW

Upper	Midsole	Outsole	Sizes	W 5-11, 12 Wide
<ul style="list-style-type: none">· 100% recycled polyester mesh· Waterproof GORE-TEX Invisible Fit membrane· Protective toe rand· Bolstered heel collar construction· Molded EVA sockliner· Vegan· Laces with 70% recycled nylon and 30% recycled polyester (excluding aglet)	<ul style="list-style-type: none">· CMEVA· Late stage MetaRocker™	<ul style="list-style-type: none">· Vibram® Megagrip with Traction Lug· 5 mm lugs	Price	\$170.00 H0009

WOMEN

1155771-BCKT
BLACK / OUTER ORBIT
08/25/2024

Core



Speedgoat 6 Mid GTX

A workhorse for sloppy, wet conditions.

The Speedgoat 6 Mid GTX is built with the same trust-inspiring waterproof GORE-TEX membrane as before—but now with a more flexible, running-friendly collar. Grounded in Vibram® Megagrip with Traction Lug for enhanced bite on loose soil, this trail icon employs a foot-cradling heel bolster, lightweight, responsive midsole compound, and a protective toe rand for charging through the rough stuff. Bring it, weather.

NEW

Upper

- 100% recycled polyester mesh
- Waterproof GORE-TEX membrane
- Protective toe rand
- Bolstered heel collar construction
- Molded EVA sockliner
- Vegan
- Laces with 70% recycled nylon and 30% recycled polyester (excluding aglet)

Midsole

- CMEVA
- Late stage MetaRocker™

Outsole

- Vibram® Megagrip with traction lug
- 5mm lugs

Sizes

W 5-11, 12

M 7-13, 14, 15 (D)

Price

\$180.00 H0059

WOMEN

1155153-GGV

GALAXY / GUAVA
09/25/2024

Annual



1155153-ADC

ASTEROID / COSMIC
GREY
08/25/2024

Core



1155153-EQM

ELECTRIC AQUA /
MIDNIGHT
08/25/2024

Seasonal



MEN

1155152-OTC

OUTER ORBIT / LETTUCE
09/25/2024

Annual



1155152-SLTG

SATELLITE GREY /
STARDUST
08/25/2024

Annual



1155152-UNS

ULTRAMARINE / STORMY
SKIES
08/25/2024

Seasonal



Speedgoat 5 GTX Spike

A weather-ready traction beast.

Built off the Speedgoat 5 GTX's blueprints, this winterized spinoff has been upgraded with enhanced traction for inclement weather. Enlisting the same GORE-TEX membrane and Vibram® Megagrip outsole, this weather-ready warrior employs 12 tungsten carbide spikes designed to keep you on your feet and off your backside.

Upper	Midsole	Outsole	Sizes	W 5-11 (B) M 7-13, 14 (D)
<ul style="list-style-type: none">· Vegan· 44% recycled polyester Double-layer jacquard engineered mesh· GORE-TEX footwear fabric with 71% recycled polyester face fabric· Jacquard engineered mesh· Protective toe cap· Molded EVA sockliner	<ul style="list-style-type: none">· CMEVA	<ul style="list-style-type: none">· Vibram® Megagrip with traction lug outsole and tungsten carbide spikes· 5 mm lugs	Price	\$180.00 H0059

WOMEN

1133532F-BBLC

BLACK / BLACK
06/25/2024

Core



MEN

1133550F-BBLC

BLACK / BLACK
06/25/2024

Core



Challenger ATR 7

Street-approved. Trail tested.

Built at the intersection of road and trail, the Challenger 7 has been completely reimagined from the ground up. Combining a simplified mesh upper with a soft new foam, we've increased the Stack Height for a plusher feel and added proprietary rubber to the bottom unit, along with a reimagined outsole design for the best all-terrain ride yet. Inspired by gravel tires, we've cued up smaller, tightly spaced lugs in center and larger, more aggressive lugs at the perimeter designed for improved traction on uneven terrain.

Upper	Midsole	Outsole	Geometry	M 31mm heel 26mm forefoot
<ul style="list-style-type: none"> Extended heel pull for easy entry Engineered mesh Laces with 70% recycled nylon and 30% recycled polyester (excluding aglet) 	<ul style="list-style-type: none"> CMEVA 	<ul style="list-style-type: none"> 4mm lugs Durabrasion rubber 	Sizes	W 5-11, 12 M 7-13, 14, 15 (D)
			Price	\$145.00 H0577

WOMEN

1134498-ERC

ETHER / COSMOS
06/25/2024

Seasonal



1134498-FBT

FOREST FLOOR / BEET ROOT
06/25/2024

Annual



1134500-FBT

FOREST FLOOR / BEET ROOT **WIDE**
06/25/2024

Annual

1134498-ACK

ALOE VERA / BLACK
07/10/2024

NEW

Seasonal



1134498-ESK

EVENING SKY / DRIZZLE
06/25/2024

NEW

Seasonal



1134498-SRDST

STARDUST / ASTEROID
07/10/2024

NEW

Core



1134498-ONN

OBSDIAN / ANCHOR
08/10/2024

NEW

Annual



1134500-ESK

EVENING SKY / DRIZZLE
WIDE
06/25/2024

NEW

Seasonal



1134500-SRDST

STARDUST / ASTEROID
WIDE
07/10/2024

NEW

Core



MEN

1134497-CFLM

CASTLEROCK / FLAME
06/25/2024

Core



1134497-OZF

OLIVE HAZE / FOREST COVER
06/25/2024

Annual



1134497-HLC

HONEY / BLACK
07/10/2024

NEW

Seasonal



1134497-OHK

OUTER ORBIT / HOKA BLUE
07/10/2024

NEW

Core



1134497-UNC

ULTRAMARINE / OCEANIC
06/25/2024

NEW

Annual



1134497-ONN

OBSDIAN / ANCHOR
08/10/2024

NEW

Annual



1134499-OHK

OUTER ORBIT / HOKA BLUE **WIDE**
07/10/2024

NEW

Core



1134499-UNC

ULTRAMARINE / OCEANIC
WIDE
06/25/2024

NEW

Annual



Challenger ATR 7 GTX

Rain or shine. Street or summit.

Built at the intersection of road and trail, the Challenger 7 GTX has been completely reimagined from the ground up. Combining a simplified mesh upper with a soft new foam, we've increased the Stack Height for a plusher feel and added GORE-TEX Invisible Fit with recycled content product technology for enhanced protection in inclement weather. Inspired by gravel tires, we've cued up smaller, tightly spaced lugs in center and larger, more aggressive lugs at the perimeter designed for improved traction on uneven terrain.

Upper	Midsole	Outsole	Sizes	Price
<ul style="list-style-type: none"> Engineered mesh GORE-TEX Invisible Fit with 70% recycled polyester face fabric Laces with 70% recycled nylon and 30% recycled polyester (excluding aglet) 	<ul style="list-style-type: none"> CMEVA 	<ul style="list-style-type: none"> 4mm lugs Durabrasion Rubber 	W 5-11, 12 M 7-13, 14, 15 (D)	\$160.00 H0058

WOMEN

1134502F-BBLC

BLACK / BLACK
06/25/2024

Core



1134502F-RLT

REAL TEAL / TECH GREEN
06/25/2024

Seasonal



1134502F-CLX

COSMIC PEARL / GALAXY
09/25/2024

NEW

Annual



MEN

1134501F-BBLC

BLACK / BLACK
06/25/2024

Core



1134501F-RLT

REAL TEAL / TECH GREEN
06/25/2024

Seasonal



1134501F-ALVR

ALOE VERA / LETTUCE
09/25/2024

NEW

Annual



TRAIL - EVERYDAY RUN

Stinson 7

Max cushion from street to summit.

If you're going to pack just one pair on your next adventure, this is it. Known as the Swiss army knife of shoes - thanks to its road-to-trail agility - the Stinson 7 cues up the perfect blend of plush cushioning and versatile traction. Made to conquer any terrain, you'll find pavement, trail, and gravel are no match for the Stinson's stabilizing H-Frame™, rubber toe cap, and multi-directional lugs.

Upper

- Engineered jacquard mesh
- Gusseted tongue
- Extended heel pull
- Internal structural reinforcement
- 87% recycled polyester insole
- 40% recycled polyester eyestay lining

Midsole

- CMEVA
- Inherently stable geometry
- H-Frame™

Outsole

- 4mm lugs
- Durabrasion rubber

Geometry

W 0.0

Sizes

W 5-11 (B)

M 7-13, 14, 15 (D)

Price

\$170.00 H0009

WOMEN

1141531-CSMR
COSMIC SKY / METEOR
06/25/2024

Core



1141531-SNBT
SEED GREEN / BEET ROOT
06/25/2024

Annual



1141531-ECN
ELECTRIC AQUA / OCEANIC
07/10/2024

NEW
Seasonal



1141531-ANCH
ANCHOR / GULL
07/25/2024

NEW

Annual



MEN

1141530-OZF
OLIVE HAZE / FOREST COVER
06/25/2024

Annual



1141530-HYN
HONEY / ANTIQUE OLIVE
06/25/2024

NEW

Seasonal



1141530-ANCH
ANCHOR / GULL
08/10/2024

NEW

Annual





OUTDOOR

Kaha 2 GTX

Pinnacle plushness with all-weather protection.

Designed with a remarkable weight-to-cushion ratio, the Kaha 2 GTX delivers peak performance with peak plushness. Featuring a Hubble® Heel with SwallowTail™ geometry, this durable hiker offers Vibram® Megagrip with Traction Lug for increased ground contact. Consciously crafted, this trailblazing silhouette employs GORE-TEX footwear fabric with recycled textile.

Upper

- Leather Working Group Gold-rated waterproof nubuck leather
- Quick-lace metal top hooks
- Abrasion resistant toe cap and heel
- GORE-TEX footwear fabric with 71% recycled polyester face fabric
- Anatomical Achilles construction with heel pull tab
- Topically applied PFC-free water repellency treatment
- 51% Recycled polyester quarter mesh and tongue mesh
- 80% Recycled polyester lining mesh

Midsole

- Dual-density CMEVA with Hubble® Heel and SwallowTail™ design
- Late stage MetaRocker™ with integrated flex grooves
- Rubberized EVA
- Molded PU sockliner with 50% soybean oil

Outsole

- Vibram® Megagrip rubber with Traction Lug design
- 5 mm lug

Sizes

W 5-11 (B)

M 7-13, 14, 15 (D)

Price

\$240.00 H00021

WOMEN

1123156F-BYCL

BARLEY / CELADON TINT
06/25/2024

Annual



1123156F-CCSH

CASTLEROCK / COASTAL SHADE
06/25/2024

Core



1123156F-OKLB

OAK / ALABASTER
06/25/2024

NEW

Seasonal



1123156F-SZQ

SMOKY QUARTZ / QUARTZITE
06/25/2024

NEW

Seasonal



MEN

1123155F-BBLC

BLACK / BLACK
06/25/2024

Core



1123155F-HLY

HONEY / BARLEY
06/25/2024

Core



1123155F-ADS

ASTEROID / STARDUST
06/25/2024

NEW

Seasonal



1123155F-OKLB

OAK / ALABASTER
06/25/2024

NEW

Seasonal



Kaha 2 Low GTX

Pinnacle plushness with all-weather protection.

Designed with a remarkable weight-to-cushion ratio, the Kaha Low 2 GTX delivers peak performance with peak plushness. Featuring a Hubble® Heel with SwallowTail™ geometry, this low-cut hiker offers Vibram® Megagrip with Traction Lug for increased ground contact. Mindfully made, this trailblazing silhouette employs GORE-TEX footwear fabric with recycled textile.

Upper

- Leather Working Group Gold-rated waterproof nubuck leather
- Quick-lace metal top hooks
- Abrasion resistant toe cap and heel
- GORE-TEX footwear fabric with 71% recycled polyester face fabric
- Anatomical Achilles construction with heel pull tab
- Topically applied PFC-free water repellency treatment
- 51% Recycled polyester quarter mesh and tongue mesh
- 80% Recycled polyester lining mesh

Midsole

- Dual-density CMEVA with Hubble® Heel and SwallowTail™ design
- Late stage MetaRocker™ with integrated flex grooves
- Rubberized EVA
- Molded PU sockliner with 50% soybean oil

Outsole

- Vibram® Megagrip rubber with Traction Lug design
- 5 mm lug

Sizes

W 5-11 (B)

M 7-13, 14, 15 (D)

Price

\$220.00 H00011

WOMEN

1123191F-SBRL

SLATE / BARLEY
06/25/2024

Annual



1123191F-CMCP

COSMIC PEARL / OAT MILK
06/25/2024

NEW

Seasonal



MEN

1123190F-BBLC

BLACK / BLACK
06/25/2024

Core



1123190F-HLY

HONEY / BARLEY
06/25/2024

Core



1123190F-GLCT

GALACTIC GREY / STARDUST
06/25/2024

NEW

Seasonal



1123190F-OKLB

OAK / ALABASTER
06/25/2024

NEW

Seasonal



Anacapa 2 Freedom

Step in, Hike on

A slip-on designed for simple on-and-off, the Anacapa 2 Freedom paves the way for adventuring outdoors. A specially designed heel flexes and springs back for easy entry, working with the integrated tongue to make sliding in a breeze. HOKA geometry and a Vibram® Megagrip outsole keep this hiker adventure-ready while sustainable materials like 55% recycled polyester meshes, a soy-based PU sockliner, and 30% sugarcane EVA help it tread more lightly.

NEW

<p>Upper</p> <ul style="list-style-type: none"> · TPU Freedom external step-in heel counter · Stretch gusset construction · Leather Working Group gold-rated tannery nubuck leather · 55% recycled polyester in collar, tongue, and vamp · Soy-based PU sockliner 	<p>Midsole</p> <ul style="list-style-type: none"> · 30% Sugarcane EVA · Hubble® Heel and SwallowTail™ geometry · Late stage MetaRocker™ 	<p>Outsole</p> <ul style="list-style-type: none"> · Vibram® Megagrip with 5mm lugs 	<table border="0"> <tr> <td style="border-bottom: 1px solid black;">Sizes</td> <td>W 5-11 (B) M 7-13, 14, 15 (D)</td> </tr> <tr> <td>Price</td> <td>\$155.00 H0577</td> </tr> </table>	Sizes	W 5-11 (B) M 7-13, 14, 15 (D)	Price	\$155.00 H0577
Sizes	W 5-11 (B) M 7-13, 14, 15 (D)						
Price	\$155.00 H0577						

WOMEN

1155193-OBT
OUTER ORBIT / OVERCAST
06/25/2024
Core



1155193-QZT
QUARTZITE / COSMIC PEARL
06/25/2024
Seasonal
MARKETING COLOR



1155193-SMGL
SESAME / GLAUCOUS
06/25/2024
Core



MEN

1155192-BBLC
BLACK / BLACK
06/25/2024
Core



1155192-FGH
FOGGY NIGHT / OAT MILK
06/25/2024
Annual



1155192-WTK
WHEAT / OAK
06/25/2024
Core
MARKETING COLOR



OUTDOOR - HIKE

Anacapa 2 Mid GTX

A versatile, all-weather hiker designed to tread lighter.

Scrutinized through the lens of sustainability, we've reimagined our beloved Anacapa Mid GTX with a renewed focus on earth-friendly materials. Updated with recycled yarn meshes, we've enlisted a 30% sugarcane EVA midsole and Vibram® Megagrip outsole. Finished with metal speed hooks and a rubber toe cap, there's no telling where this hiker will take you.

Upper

- PFC-Free water repellency treatment
- GORE-TEX bootie construction with 71% recycled polyester face fabric
- Leather Working Group gold-rated waterproof nubuck leather
- metal hardware lacing
- 100% Recycled vamp and quarter mesh
- 100% Recycled polyester collar, tongue lining
- Molded PU sockliner derived from 50% soybean oil

Midsole

- 30% Sugarcane EVA
- Hubble® Heel and SwallowTail™ geometry
- Late stage MetaRocker™

Outsole

- Vibram® Megagrip with 5mm lugs

Sizes

W 5-11 (B)

M 7-13, 14, 15 (D)

Price

\$195.00 H0579

WOMEN

1142831F-ATRL

ASTRAL / ILLUSION
06/25/2024

Annual



1142831F-DIFL

DUNE / ICE FLOW
06/25/2024

Core



1142831F-DLL

DUSK / ILLUSION
06/25/2024

Annual



1142831F-DDS

DEEP UMBER / STARDUST
06/25/2024

NEW

Core



1142831F-RYBR

RYE / BARK
06/25/2024

NEW

Core



1155250-DDS

DEEP UMBER / STARDUST
WIDE

06/25/2024

Core

MEN

1141633F-BBLC

BLACK / BLACK
06/25/2024

Core



1141633F-DOTN

DUNE / OXFORD TAN
06/25/2024

Core



1141633F-HYC

HONEY / CELADON TINT
06/25/2024

Core



1155251-BBLC

BLACK / BLACK **WIDE**
06/25/2024

Core

1155251-DOTN

DUNE / OXFORD TAN
WIDE

06/25/2024

Core

1141633F-RYBR

RYE / BARK
06/25/2024

NEW

Core



1141633F-VNV

VARSITY NAVY / OAT MILK
06/25/2024

NEW

Seasonal



1155251-RYBR

RYE / BARK **WIDE**
06/25/2024

Core

Anacapa 2 Low GTX

A versatile, all-weather hiker designed to tread lighter.

Scrutinized through the lens of sustainability, we've reimagined our beloved Anacapa Low GTX with a renewed focus on earth-friendly materials. Updated with recycled yarn meshes, we've enlisted GORE-TEX Invisible Fit technology, a 30% sugarcane EVA midsole, and a Vibram® Megagrip outsole. Finished with metal eyelets and an abrasion resistant toe cap, there's no telling where this hiker will take you.

Upper

- PFC-free water repellency treatment
- GORE-TEX Invisible Fit with 70% recycled polyester face fabric
- Leather Working Group gold-rated waterproof nubuck leather
- Quick hook lace
- Molded PU sockliner derived from 50% soybean oil
- 100% Recycled vamp and quarter mesh
- 100% Recycled polyester collar, tongue lining and external collar mesh

Midsole

- 30% Sugarcane EVA
- Hubble® Heel and SwallowTail™ geometry
- Late stage MetaRocker™

Outsole

- Vibram® Megagrip with 5mm lugs

Sizes

W 5-11 (B)

M 7-13, 14, 15 (D)

Price

\$180.00 H0009

WOMEN

1142830F-BYCL

BARLEY / CELADON TINT
06/25/2024

Core



1142830F-MCSK

METEOR / COSMIC SKY
06/25/2024

Annual



1142830F-SYQ

SMOKY QUARTZ /
COSMIC PEARL
06/25/2024

NEW

Seasonal



1155252-BYCL

BARLEY / CELADON TINT
WIDE
06/25/2024

Core

1155252-SYQ

SMOKY QUARTZ /
COSMIC PEARL **WIDE**
06/25/2024

Seasonal

MEN

1141632F-BBLC

BLACK / BLACK
06/25/2024

Core



1141632F-DOTN

DUNE / OXFORD TAN
06/25/2024

Core



1141632F-HLY

HONEY / BARLEY
06/25/2024

Annual



1155253-BBLC

BLACK / BLACK **WIDE**
06/25/2024

Core

1141632F-RYBR

RYE / BARK
06/25/2024

NEW

Core



1155253-RYBR

RYE / BARK **WIDE**
06/25/2024

Core

Anacapa Breeze Mid

An ultra-breathable warm weather hiker.

More breathable than ever before, the Anacapa features an ultra-ventilated upper and sharp focus on sustainability. Engineered for warmer climates, the Breeze Mid adopts a 100% rPET engineered knit upper, lateral Ariaprene® collar, and the same iconic Hubble® heel geometry and Vibram® Megagrip outsole that made its predecessor a trail icon.

Upper

- Engineered air mesh with 100% rPET yarns
- Anatomical Achilles construction
- Quick-lace, metal top-hook
- Molded PU sockliner with 50% soybean oil
- 80% recycled polyester external lateral collar Ariaprene® mesh
- 100% Recycled polyester tongue lining mesh
- 70% Recycled polyester external tongue mesh
- 100% recycled polyester laces (excluding aglet)
- Heel webbing made with 100% recycled polyester

Midsole

- CMEVA
- Hubble® Heel and SwallowTail™ geometry
- Late stage MetaRocker™

Outsole

- Vibram® Megagrip rubber outsole
- 5mm lugs

Geometry	W 0.0
	M 0.0
Sizes	W 5-11 (B)
	M 7-13, 14, 15 (D)
Price	\$170.00 H0058

WOMEN

1134506-AMTH
AMETHYST / ILLUSION
06/25/2024

Annual



1134506-DEGG
DUNE / EGGNOG
06/25/2024

Core



1134506-FGL
FOGGY NIGHT / GLACIER
BLUE
06/25/2024

NEW

Annual



MEN

1134505-DOTN
DUNE / OXFORD TAN
06/25/2024

Core



1134505-OCL
OLIVE HAZE / CELADON
TINT
06/25/2024

Annual



1134505-GCS
GALACTIC GREY /
COSMIC GREY
06/25/2024

NEW

Annual



Anacapa Breeze Low

An ultra-breathable warm weather hiker.

More breathable than ever before, the Anacapa features an ultra-ventilated upper and sharp focus on sustainability. Engineered for warmer climates, the Breeze Low adopts a 100% rPET engineered knit upper and maintains the same iconic Hubble® heel geometry and Vibram® Megagrip outsole that made its predecessor a trail icon.

Upper

- Engineered air mesh with 100% rPET yarns
- Anatomical Achilles construction
- Molded PU sockliner with 50% soybean oil
- 100% Recycled polyester tongue lining mesh
- 70% Recycled polyester external tongue mesh
- 100% recycled polyester laces (excluding aglet)
- Heel webbing made with 100% recycled polyester

Midsole

- CMEVA
- Hubble® Heel and SwallowTail™ geometry
- Late stage MetaRocker™

Outsole

- Vibram® Megagrip rubber outsole
- 5mm lugs

Geometry	W 0.0
	M 0.0
Sizes	W 5-11 (B)
	M 7-13, 14, 15 (D)
Price	\$155.00 H0577

WOMEN

1127921-ISL
ILLUSION / SLATE
06/25/2024

Annual



1127921-OTPW
OXFORD TAN / PEACH
WHIP
06/25/2024

Core



1127921-FGGY
FOGGY NIGHT / PALE
ROSE
06/25/2024

NEW

Annual



MEN

1127920-BYT
BARLEY / OAT MILK
06/25/2024

Annual



1127920-BBLC
BLACK / BLACK
06/25/2024

Core



1127920-DOTN
DUNE / OXFORD TAN
06/25/2024

Core



1127920-GLXY
GALAXY / METEOR
06/25/2024

NEW

Annual



Hopara 2

Feels like a sandal, functions like a hiker.

Equally at home by land or water, the Hopara 2 tackles mud, dirt, and rocks with the same amphibian-like ease. Reconceived with earth-conscious materials, we've implemented a 30% sugarcane topsole, 100% recycled knit upper, and 100% recycled CORDURA® mesh overlays to allow for water drainage while keeping trail debris at bay. Engineered with a toggle lace, adjustable heel strap, and quick-dry water repellency, there's no need to take your shoes off at the next creek crossing.

Upper

- Topically applied PFC-Free water repellency treatment
- CORDURA® 100% rPET
- Engineered knit
- Adjustable heel strap
- Fast-dry performance build
- Quick-lace system

Midsole

- Molded sugarcane EVA topsole
- Rubberized EVA midsole

Outsole

- Rubberized toe cap
- Durabrasion rubber
- 4mm multidirectional lugs

Sizes	W 5-11 (B) M 7-13, 14 (D)
Price	\$135.00 H0576

WOMEN

1147670-BBLC

BLACK / BLACK
06/25/2024

Core



1147670-INM

ILLUSION / AMETHYST
06/25/2024

Annual



1147670-QZT

QUARTZITE / COSMIC
PEARL
06/25/2024

NEW
Seasonal



MEN

1147650-BYT

BARLEY / OAT MILK
06/25/2024

Annual



1147650-BBLC

BLACK / BLACK
06/25/2024

Core



1147650-FHT

FOGGY NIGHT / STARDUST
06/25/2024

NEW
Seasonal





Transport Chukka GTX

City or Trail, Rain or Shine

A natural on city streets and trails alike, this weather-ready style turns up the vibe of the original Transport with a waterproof chukka silhouette. Designed with an engineered knit collar, rugged nubuck leather, and 360-degree reflectivity, the Transport Chukka GTX transitions seamlessly from the daily commute to weekend adventures. And sustainability initiatives—like Vibram EcoStep EVO rubber with 30% regrind recycled rubber, a 30% Sugarcane EVA midsole, and a 50% soy-based sockliner—take this style to the next level.

NEW

Upper

- Quick-toggle lace
- 360 degrees of reflectivity
- Leather Working Group gold-rated tannery nubuck leather
- Waterproof GORE-TEX Invisible Fit with 70% recycled polyester face fabric
- Engineered knit collar
- Abrasion toecap
- Molded 50% soy-based PU sockliner
- 100% recycled polyester tongue and collar lining
- 100% recycled CORDURA® mesh tongue, and mesh rear quarter

Midsole

- 30% Sugarcane EVA content

Outsole

- Vibram® EcoStep Recycle EVO

Sizes

W 5-11 (B)

M 7-13, 14, 15 (D)

Price

\$200.00 H00001

WOMEN

1155191-ABST

ALABASTER / ALABASTER
07/25/2024

Core



1155191-BKLB

BLACK / ALABASTER
07/25/2024

Core



1155191-CMCP

COSMIC PEARL / OAT MILK
07/25/2024

Annual



MEN

1155190-ADS

ASTEROID / STARDUST
07/25/2024

Seasonal



1155190-BKLB

BLACK / ALABASTER
07/25/2024

Core



1155190-BBLC

BLACK / BLACK
07/25/2024

Core



Transport

Performance-minded. City-savvy.

Conceived at the intersection of lifestyle and performance, this commuter-friendly style offers a multitude of sustainability features across the outsole, midsole, and upper. Designed with the city-dweller in mind, the Transport employs a 30% sugarcane EVA midsole, a Vibram® EcoStep CTEC outsole, and CORDURA® re/core™ with 100% rPET, plus a quick-toggle lace and 360 degrees of reflectivity.

Upper

- Vegan
- Abrasion resistant textile
- Ripstop textile, 360-degree reflective details
- Molded PU sockliner with 50% soybean oil
- 87% recycled polyester strobol board
- 100% recycled polyester vamp and tongue CORDURA® mesh
- 100% recycled polyester rear-quarter mesh, tongue and collar lining
- 100% recycled polyester ghillie webbing textile

Midsole

- 30% Sugarcane EVA content

Outsole

- Vibram® EcoStep Recycle
- 3mm lugs

Geometry

W 27mm heel 22mm forefoot
M 29mm heel 24mm forefoot

Sizes

W 5-11 (B)
M 7-13, 14, 15 (D)

Price

\$150.00 H0057

WOMEN

1123154-EEGG
EGGNOG / EGGNOG
06/25/2024
Core



1123154-RLTL
REAL TEAL / DUSK
06/25/2024
Annual



1123154-WWH
WHITE / WHITE
06/25/2024
Core



1164371-EEGG
EGGNOG / EGGNOG
WIDE
06/25/2024
Core



1164371-WWH
WHITE / WHITE **WIDE**
06/25/2024
Core



1123154-BKLB
BLACK / ALABASTER
06/25/2024
NEW
Annual



1123154-CMCP
COSMIC PEARL / OAT MILK
06/25/2024
NEW
Annual



1123154-STZ
SMOKY QUARTZ / OAT MILK
06/25/2024
NEW
Seasonal



1164371-BKLB
BLACK / ALABASTER
WIDE
06/25/2024
Core



1164371-CMCP
COSMIC PEARL / OAT MILK **WIDE**
06/25/2024
Annual



MEN

1123153-BBLC
BLACK / BLACK
06/25/2024
Core



1123153-DEGG
DUNE / EGGNOG
06/25/2024
Core



1123153-WWH
WHITE / WHITE
06/25/2024
Annual



1164370-BBLC
BLACK / BLACK **WIDE**
06/25/2024
Core



1164370-WWH
WHITE / WHITE **WIDE**
06/25/2024
Core



1123153-ARV
ALABASTER / VARSITY NAVY
06/25/2024
NEW
Annual



1123153-BKLB
BLACK / ALABASTER
06/25/2024
NEW
Annual



1123153-VYN
VARSITY NAVY / WHITE
06/25/2024
NEW
Annual



1164370-BKLB
BLACK / ALABASTER
WIDE
06/25/2024
Core



1164370-VYN
VARSITY NAVY / WHITE
WIDE
06/25/2024
Core



Transport GTX

A weather-ready ride for everyday adventures

Conceived at the intersection of lifestyle and performance, this commuter-friendly style offers a multitude of sustainability features across the outsole, midsole, and upper. Designed with the city-dweller in mind, the Transport GTX employs a 30% sugarcane EVA midsole, Vibram® EcoStep EVO outsole that uses 30% regrind recycled rubber, and GORE-TEX Invisible Fit for enhanced moisture management, plus a quick-toggle lace and 360-degrees of reflectivity.

Upper

- PFC-Free water repellency treatment
- CORDURA® 100% rPET
- Ripstop textile, 360-degree reflective details
- Quick lace system
- GORE-TEX Invisible Fit with 70% recycled polyester face fabric
- Molded PU sockliner with 50% soybean oil

Midsole

- 30% Sugarcane EVA content

Outsole

- Vibram® EcoStep Recycle EVO
- 3mm lugs

Sizes

W 5-11 (B)

M 7-13, 14, 15 (D)

Price

\$175.00 H0578

WOMEN

1133958F-DEGG

DUNE / EGGNOG
06/25/2024

Core



1133958F-ORS

OPAL / VAPOROUS
06/25/2024

Annual



1133958F-CCPR

COSMIC PEARL / COSMIC PEARL
06/25/2024

NEW

Annual



MEN

1133957F-BLCKB

BLACK / BLACK
06/25/2024

Core



1133957F-STTM

SLATE / OAT MILK
06/25/2024

Core



1133957F-GLCT

GALACTIC GREY / STARDUST
06/25/2024

NEW

Annual



1133957F-WLK

WHEAT / OAT MILK
06/25/2024

NEW

Annual



Trail Code GTX

Light, cushioned and ready for everyday adventures.

Honoring the unspoken code of the trail, this day hiker treads lighter with responsible manufacturing practices. Grounded in a Hubble® heel with SwallowTail™ geometry, the Trail Code uses a responsive new foam for exceptional cushioning. Finished with dimensional screen printing to decrease waste and increase durability, this trail contender was made for exploring.

Upper	Midsole	Outsole	Sizes
<ul style="list-style-type: none"> · 100% rPET ripstop textile · 3D screen print overlay · Quick-lace metal top hooks · GORE-TEX bootie construction with 71% recycled polyester face fabric · Anatomical Achilles construction with heel pull tab · PFC-free water repellency treatment · 100% Recycled polyester webbing/laces (excluding aglet) · 68% recycled polyester external collar mesh · 100% Recycled polyester tongue/ collar lining and heel webbing 	<ul style="list-style-type: none"> · CMEVA with Hubble® Heel and SwallowTail™ design · Late stage MetaRocker™ · Molded PU sockliner with 50% soybean oil 	<ul style="list-style-type: none"> · Vibram® Megagrip rubber · 5mm lug 	W 5-11 (B) M 7-13, 14 (D)
			Price \$185.00 H0529

WOMEN

1123166F-BCSTL
 BLACK / CASTLEROCK
 06/25/2024

Core



1123166F-FTQ
 FOGGY NIGHT / AQUA
 BREEZE
 06/25/2024

NEW
 Annual



MEN

1123165F-BRVN
 BLACK / RAVEN
 06/25/2024

Core



1123165F-GCQ
 GALACTIC GREY /
 ELECTRIC AQUA
 06/25/2024

NEW
 Annual





Restore TC

Maximal comfort. Minimal materials.

A progressive slip-on designed with the circular economy in mind, Restore TC is engineered from minimal materials and employs a simple, three-part construction. Pairing a stretchy, sock-like upper with a 30% sugarcane-based EVA insole and 20% sugarcane-based EVA outsole, we've enlisted a protective EVA toe cap and targeted stretch zones for the ultimate in all-day comfort.

Upper

- Engineered jacquard mesh
- Dope dye yarn process
- Extended heel pull for easy entry
- Gusseted tongue

Midsole

- Molded sockliner with 30% sugarcane EVA
- Hubble® Heel geometry

Outsole

- 20% Sugarcane, ground-contact IMEVA

Geometry	0.0
Sizes	04/05-14/15 M/W
Price	\$110.00 H0055

UNISEX

1134532-BBLC

BLACK / BLACK
06/25/2024

Core



1134532-DOTN

DUNE / OXFORD TAN
06/25/2024

Core



1134532-FTRS

FROST / ROSE GOLD
06/25/2024

NEW
Seasonal



1134532-AYN

AZURE RAIN / FOGGY NIGHT
07/25/2024

NEW
Annual



ORA Recovery Slide 3

An ultralight recovery slide.

Built off the blueprints of the beloved Ora Slide, we've added four air flow channels for superior breathability. A comfort-driven style designed for downtime; this sustainable spinoff treads lighter with an earth-friendly sugarcane footbed. Grounded in the same dual-density geometry and injection-molded outsole as the original icon, the ORA Slide 3 delivers foot-cradling comfort in a future-friendly silhouette.

Upper	Midsole	Outsole	Geometry	33mm heel 27mm forefoot
<ul style="list-style-type: none"> · Dual density HOKA geometry · Ventilated air flow design 	<ul style="list-style-type: none"> · IM Sugarcane EVA 	<ul style="list-style-type: none"> · IMEVA 	Sizes	03/05 - 14/16 M/W Whole
			Price	\$60.00 H0003

UNISEX

1135061-BBLC

BLACK / BLACK
06/25/2024

Core



1135061-GYGY

GREY / GREY
06/25/2024

Core



1135061-SSSS

SHIFTING SAND /
SHIFTING SAND
06/25/2024

Core



1135061-WWHH

WHITE / WHITE
06/25/2024

Core



1135061-VYF

VARSITY NAVY / FARRO
10/10/2024

NEW
Energy



1135061-AZC

AQUA BREEZE / CELERY
JUICE
06/25/2024

NEW
Seasonal



1135061-ELCT

ELECTRIC COBALT /
ELECTRIC COBALT
06/25/2024

NEW
Seasonal



1135061-PWLG

PINK TWILIGHT / PINK
TWILIGHT
06/25/2024

NEW
Seasonal



1135061-BLLR

BLACK / STELLAR GREY
06/25/2024

NEW
Seasonal



RECOVERY

Ora Recovery Mule

Recovery, redefined.

A statement-making style with futuristic design cues, the new Ora Mule is poised to redefine recovery. Oscillating between fashion and function, this sleek slip-on capitalizes on the current EVA trend with an injection molded EVA cradle, sugarcane EVA midsole, and vented air flow channels for ultimate breathability.

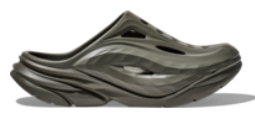
Upper · Ventilated air flow channels	Midsole · Sugarcane EVA drop-in midsole	Outsole · Injection molded EVA cradle	Sizes 03/05 - 14/16 M/W Whole
			Price \$80.00 H0004

UNISEX

1147951-BBLC
BLACK / BLACK
06/25/2024
Core



1147951-SLTSL
SLATE / SLATE
06/25/2024
Core



1147951-VLV
VANILLA / VANILLA
06/25/2024
Core



1147951-WWH
WHITE / WHITE
06/25/2024
Core



RECOVERY

FLY HUMAN FLY



HOKA
FLY HUMAN FLY